

Versatrans e-Link

Connect with Schools and the Community

At Tyler, we understand the need to get all important transportation information into the hands of the right people, at the right time. Efficient communication and data coordination are paramount to a successful transportation department, especially with parents and district employees located outside of the transportation department. Parents need to know where their students should wait for the bus and authorized employees need to retrieve bus stop information for students. Information must be comprehensive, easily accessible and stored in one complete system. Enter Tyler's Versatrans e-Link[®].

e-Link

Your phone rings off the hook every day with questions from remote employees, parents and district personnel, wasting time and increasing overhead costs. Through Tyler's Versatrans e-Link application, you can reduce administrative burden on your office by granting access to select data within Versatrans Routing & Planning, our comprehensive and effective routing and planning solution, to authorized personnel within the district and parents. With this Web browser-based application, users can access answers to their important questions quickly and easily over the Internet, so your department's phone lines are free for day-to-day operations. Information contained within Routing & Planning is password protected for complete security, and authorized users only have access to data relevant to their status and needs. Offices can also grant authorized student data entry to select personnel in other departments, making transportation forms a thing of the past.

How Schools use e-Link

e-Link provides school administrators, employees, parents, and community members with an easy way to access all important school transportation information.

Bus Stop Look Up

Parents can log in anytime and anywhere to access individual student transportation information, reducing phone call requests for information and saving time for both parents and school employees.

School Look Up

Used primarily by parents or real estate agents, School Look Up allows users to input a specific address and grade to determine which school a student would attend if he or she were located at that address. This functionality is very helpful for families moving to a new area who would like to access specific school and transportation information for the new location. Users can access the system anytime and anywhere, leading to a reduction in the number of time-consuming information requests to school offices.

...continued on reverse

Versatrans e-Link allows transportation professionals to:

- Get important transportation information from Versatrans[®] Routing & Planning[™] into the hands of authorized people instantly

Versatrans e-Link

Powerful Features, Versatile Functioning

Advanced features and powerful functioning save time and money by ensuring a decrease in data errors, reduction in duplicate data entry, and improved communications with students, parents and district personnel. Transportation department offices gain greater efficiency through a reduction in incoming calls, and all authorized users have access to accurate and timely bus information.

Features and Services

Features

Administrative options for protection of restricted data—allow or restrict access to functionality as needed so users see and do only what you allow them to.

Remote registration and data entry—grant remote users, such as registrars and school secretaries, access to register and update students, eliminating transportation forms.

Multi-user concurrent access—access to e-Link is through a Web browser, eliminating the need for expensive software installation on office computers.

Student route, pick up and drop off time information availability—allow remote users to look up and report on student route, and pick up and drop off time information.

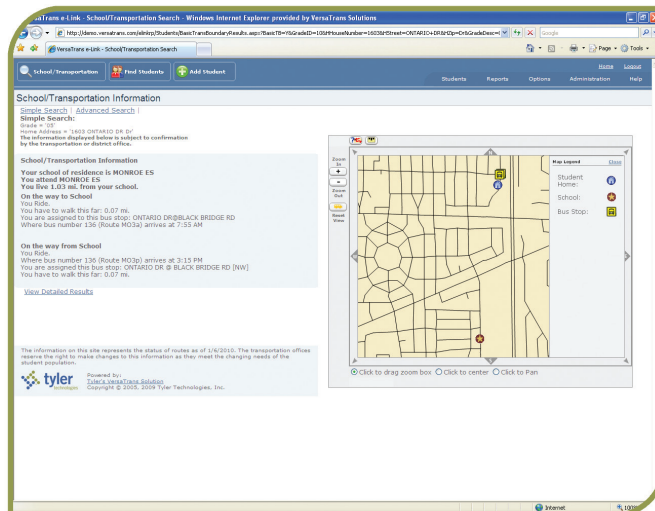
Role-based visual calendar—utilize internally for specific department calendars or release school/district calendars to parents. The information available is dependent on user rights.

View future route changes—e-Link pulls information on changes that have been scheduled in Routing & Planning and provides a transportation calendar view of start and/or end dates.

Flexible implementation options—deploy the system on your intranet or the Internet; the choice is yours.

Online parent communication—allow parents/guardians to send messages notifying the transportation office of changes to their child's transportation needs.

Lost password retriever—an automated retrieval system can look up parent passwords using a pre-provided e-mail address and security question.



Routing map integration—access map views on all school/transportation screens and the stop listing report.

Services

Support—Every Versatrans client agrees that our technical support team is the best around. Calls are almost always answered live by highly trained technicians.

Upgrades—Versatrans is always raising the bar with all their applications and is committed to releasing two upgrades to e-Link every year.