



Versatrans Onscreen®

Ride Along with Your Fleet

At Tyler, we understand the challenges facing transportation directors. You need to know where your district vehicles are at all times, be able to make changes to routes, and have a choice of vendors when it comes to purchasing GPS hardware. Enter Tyler's Versatrans Onscreen.

Onscreen

With Onscreen, the industry's premier GPS fleet tracking solution, you can follow your fleet when the buses roll. The flexible and user-friendly Web-based user interface provides a variety of options for monitoring driver, bus and route activity—all the components that are critical to ensuring student safety and office efficiency. What's more, you can identify potential problems before they occur, further optimize your routes using actual route data, and stay informed about your fleet anytime, anywhere via the Internet. Onscreen is different from other GPS tracking solutions. How? It's a unique hardware-independent solution, designed by experts with over 25 years of experience in pupil transportation. Integrated with Versatrans Routing & Planning™, Onscreen is backed by our unparalleled service and support.

Powerful Features, Versatile Functioning

Onscreen is second to none when it comes to versatility and features. For instance, users have immediate access to all route information with the ability to view, report on and answer parent questions on current driver activity. What's more, intuitive and flexible reporting functionality allows offices to generate all needed reports at any time, improving office efficiency and ensuring all state requirements are met.

...Continued on reverse

Versatrans Onscreen® allows transportation professionals to:

- Know where all district vehicles are at all times
- Feel confident when responding to the question "Where is the bus right now?"
- Make changes to routes in Versatrans® Routing & Planning based on the actual path the vehicle drives
- Have a choice of vendors when it comes to purchasing GPS hardware

Empowering people who serve the public®



For more information, visit
www.tylertech.com
or email
info@tylertech.com

Versatrans Onscreen®

Features and Services

Features

Advanced route optimization based on actual route data—make key adjustments to routes based on an analysis of actual route data available within inquiries and reports.

Immediate access to route information—view, report on and answer parent questions on current driver activity such as stops taken (or not taken), speeds, stop times and more.

Driver behavior, route information and bus information alerts—head off potential problems by configuring the system to collect data on and alert you to key driver, route and vehicle information through screen and audible notifications.

Off path alerts and reporting—know the second a vehicle deviates from the planned route. These routes are flagged in the system allowing Transportation Professionals to view the actual path and planned path on the same map or get a text print out.

Hardware-independent design—Onscreen currently accepts data from the leading GPS hardware providers, and new providers are continually evaluated for possible future integration.

Automatic route building—easily create new routes by exporting GPS data points from Onscreen into a Routing & Planning route record.

Geographical boundary monitoring—easily create unlimited geographical boundaries, and geofences, that trigger an alert when a specified vehicle enters or leaves the area.

Vehicle activity report generation—quickly generate a report that outlines vehicle activity both in and out of a geofence.

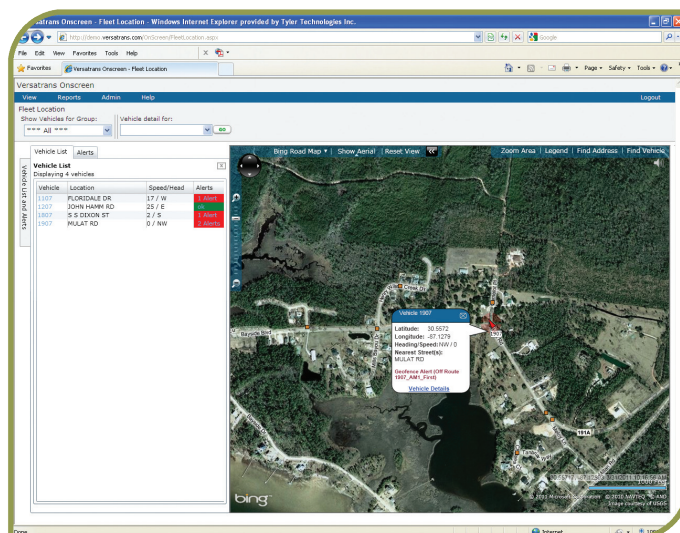
Driver and vehicle substitutions—ability to track the actual driver and/or vehicle when substitute drivers and/or spare vehicles are used.

Departure/Arrival reporting—this report allows transportation professionals to see in one report when vehicles actually leave and arrive at their destinations and compares it to the scheduled times.

Fast route creation—automatically generate routes based on GPS data exported to Routing & Planning.

Multiple map displays—quickly toggle between the Routing & Planning map, a Bing™ aerial map or a hybrid of the both.

Student tracking—Onscreen collects and displays time and location data provided by student tracking hardware solutions.



Estimated time of arrivals at bus stops—give parents/guardians the ability to check the location of the bus and the estimated time of arrival at their student's bus stop through a mobile device.

Services

Implementation & product orientation—qualified Versatrans team members ensure that Onscreen is fully functional with your GPS hardware.

Support—every Versatrans client agrees that our technical support team is the best around. Calls are almost always answered live by a highly trained technician.

Upgrades—Versatrans is always raising the bar with each and every one of their applications and is committed to releasing two feature rich upgrades to Onscreen every year.